



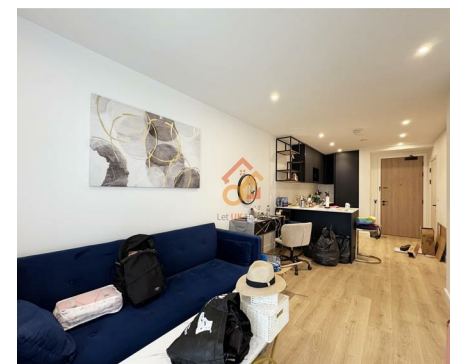
萊英家
Let UK Home

1 Bedrooms

Flat - Studio

Located in Wembley

£1,700 Per Month



info@letukhome.co.uk

<https://www.letukhome.co.uk/>

02045348146



Beresford Avenue Wembley

HA0 1PY



Let UK Home are excited to offer this spectacular studio in the heart of Affinity House part of the Grand Union in Wembley.

The flat comprises a spacious open kitchen with a stylishly attached dining area, a magnificent living room leading to a private balcony, one bright bedroom and one modern bathroom. A virtual viewing is provided.

Residents of this exceptional development have exclusive use of fitness gym, bowling alley, screening room and residents lounge. Furthermore, residents will also benefit from a 24 hour concierge and an unrivalled selection of shops, bars, restaurants, leisure facilities and beautiful courtyards.

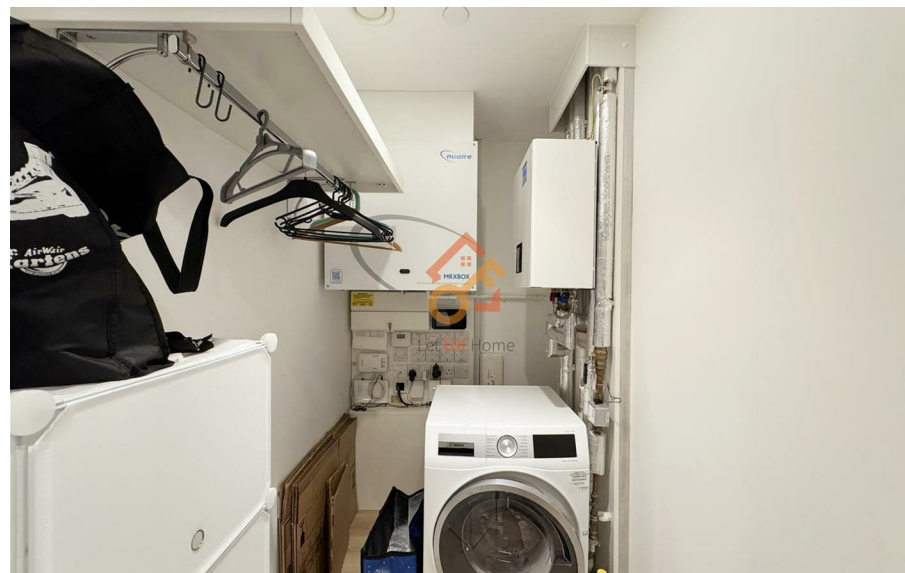
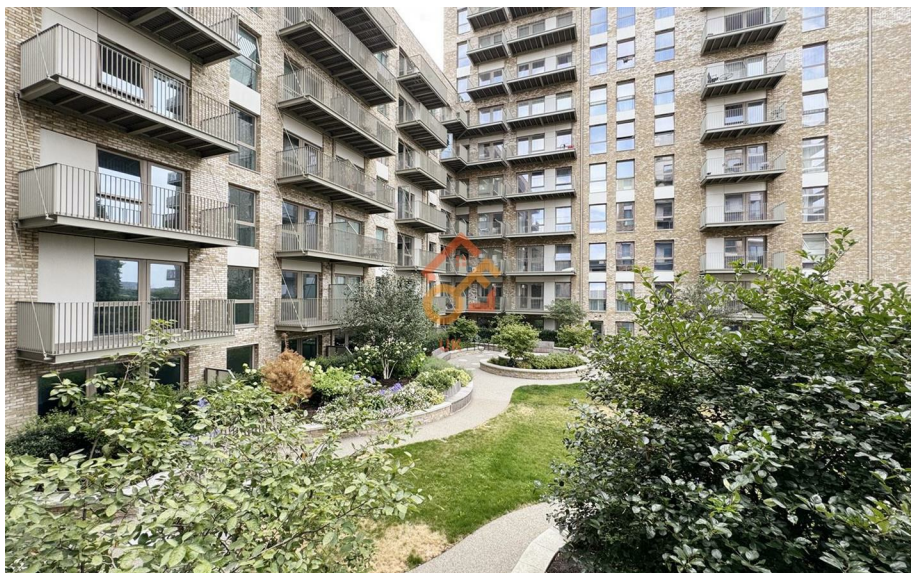
There are many restaurants, bars and supermarkets around the apartment. It takes only a few minutes to drive to Ealing Road and Harrow Road. These two roads are the two most prosperous commercial streets near the project. There are many commercial places on both sides of the road, including many restaurants, bars, shopping malls, supermarkets, bank branches, post offices, etc.

The apartment is within walking distance of Stonebridge Park train station and subway station and Alperton subway station. There is a bus stop at the door of the apartment, and you can take a bus directly to the subway station. Whether you take the Piccadilly Line, Baker Line or train, you can go directly to the center of London, which is very convenient.

Beresford Avenue Wembley

£1,700 Per Month

- 2nd Floor
- 24h Security
- Cinema & Game Room
- Residents Lounge
- Virtual Viewing Available
- Concierge Service
- The Gym
- Bowling Alley
- Community Courtyard





萊英家
Let **UK** Home

6/F Two Kingdom Street

London

W2 6BD

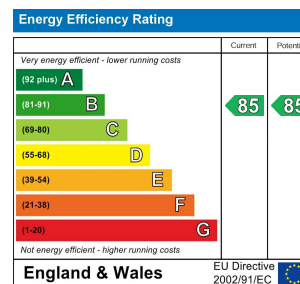
02045348146

info@letukhome.co.uk

Council Tax Band: C

Local Authority:

Agents Note: Whilst every care has been taken to prepare these particulars, they are for guidance purposes only. All measurements are approximate and are for general guidance purposes only and whilst every care has been taken to ensure their accuracy, they should not be relied upon and potential buyers/tenants are advised to recheck the measurements.



<https://www.letukhome.co.uk/>